
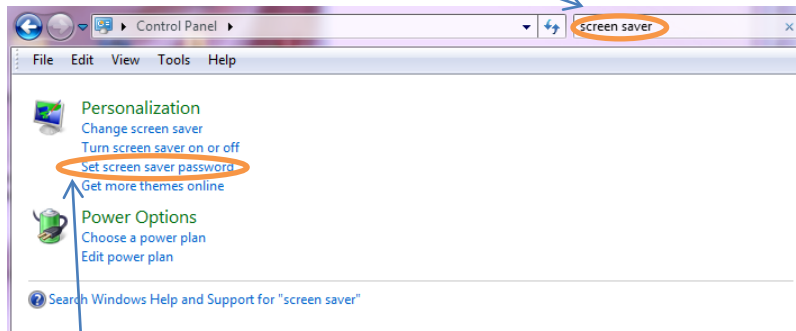
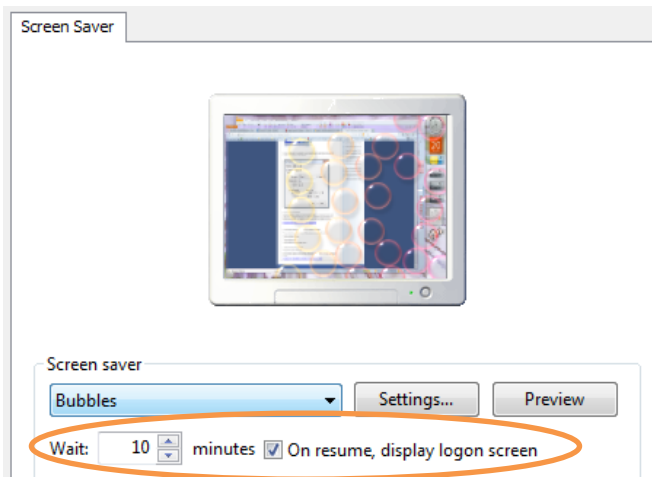


Use your Windows password for your screen saver password

1. Open Screen Saver Settings by clicking the **Start button** , and then click on **Control Panel**.
2. In the search box, type screen saver,



3. Click **Set screen saver password**.
4. Click the **On resume, display logon screen** check box to enable the password.



5. Set a time when you want the screen saver to start, and then click OK. (Choose a time that's not long enough for an unauthorized person to use your computer, but not so short that if you stop working at your computer for a moment, the screen saver locks it.)